

you can  
**Canon**

**iR3025N**  
**iR3035N**  
**iR3045N**  
Multifunctional Printer

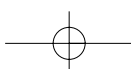
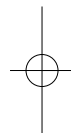
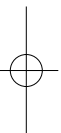
Productive, cost-effective  
document communication  
for the office

Multifunctional

Quality printing



iR3025N / iR3035N / iR3045N



# Make productive multifunctional printing a reality in your office

Canon makes document creation, printing and information sharing easy and cost effective. The iR3025N, iR3035N and iR3045N are a range of powerful black and white multifunctional printers that set the highest standards in affordable office productivity. Each device incorporates intelligent technology and is compatible with powerful software to provide simplicity of operation and exceptional levels of management control.

**Powerful document communication.**

Secure information.

Print Ready Device.

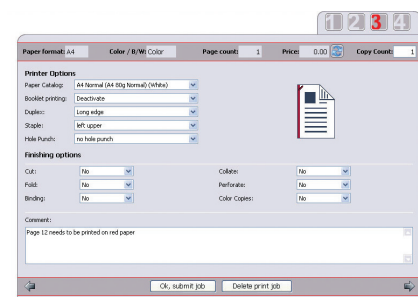


## High productivity

As a single device that handles the work of many, the iR3025N, iR3035N and iR3045N save valuable space taken up by separate faxes, printers, scanners and copiers – and all the time your staff spend rushing between them. Now everyone can create, share and distribute documents with ease and with a professional finish – without the hassle and expense of outsourcing.

## Cost effective, controllable printing

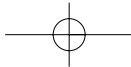
The iR3025N, iR3035N and iR3045N allow you to produce all your document communication using double-sided printing which is more cost-effective and adds a professional touch to all your documents. Incorporating Canon's optional uniFLOW Output Manager software takes printing knowledge and cost management to a different level.



uniFLOW Output Manager software

uniFLOW provides an ongoing and detailed insight into who is printing what, where, and how much it's costing you. It also allows you to automatically redirect prints to the most cost-efficient device on the network or to control the output levels of each department. This makes budgeting easier and helps you to realise a clear return on your investment.

**Confident control**



iR3025N / iR3035N / iR3045N

### Safe and secure information

Canon ensures your business information is safe and secure. Access to the iR3025N, iR3035N and iR3045N is controllable via passwords, your company's network log-in procedure, or even fingerprints\*.

- Documents can be held in secure mailboxes, until the relevant user is ready to print them at the device.
- Documents can also be encrypted before sending to others.
- For highly sensitive material, a watermark can be embedded into a printed document, becoming prominent when someone attempts to make a copy.
- To minimise the threat of external hacking, network authentication tools ensure that only authorised PCs or Macs can communicate with the iR3025N, iR3035N and iR3045N.
- Device hard disks can be erased or encrypted, and "job logs" concealed. The hard disk encryption security kits have Common Criteria certification, ensuring a recognised standard of data protection.

**Real security**

**Confidential documents sent to print \*** If document is copied, watermark becomes visible \*\*



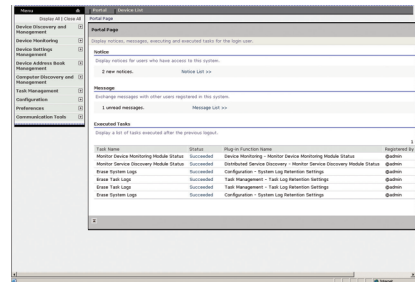
\* with uniFLOW software

\*\* if enabled this becomes a default setting applied to all output

### Easy for IT

The Canon iR3025N, iR3035N and iR3045N come "network-ready", so installing on your network is a simple task. An optional Post Script printer kit is also available.

iW Management Console (iWMC) is a web-based utility that facilitates centralised management of networked devices – ideal for busy IT departments. This standard feature enables remote management of device settings, discovery of new devices using automated tasks, and device error notifications via email. Emails can indicate low toner, paper jams, and device maintenance problems so they can be dealt with easily and quickly, ensuring minimal downtime. iWMC also allows administrators to replicate settings and address books across multiple devices.

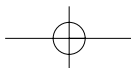


iWMC Main portal

The iR3025N, iR3035N and iR3045N also employs an identical user interface to Canon's Office Colour devices making multiple device deployments throughout your company simple, and enabling users to effortlessly switch between one device and another.

Using Canon's optional e-Maintenance system, device problems can be automatically reported, so there's no need to worry about constant monitoring.

Identical User Interface to Canon's Office Colour Devices





# All your office needs handled in one brilliant device

Canon brings you the very best in office technology combined into a single device that handles everything effortlessly and simultaneously. Now with the productive iR3025N, iR3035N, and iR3045N you can print, copy, fax, scan, and send information quickly, reliably, and with consistent high quality.

## Productive, reliable printing

The iR3045N prints and copies at a brisk 45 pages per minute, with the iR3035N and iR3025N producing 35 and 25 pages per minute respectively. Speed aside, performance is identical across all devices giving you the option to choose one that best suits to your deadlines and budgetary constraints. All devices come print ready with UFR II & PCL installed as standard, with the option to install Post Script if required.

A simple to use interface means sophisticated print jobs can be undertaken from users' desktops. A large colour touch screen makes operation at the device equally simple. Both interfaces are also shared with Canon's Office Colour range so different devices can be used within your office without any retraining.

Print at  
45 ppm



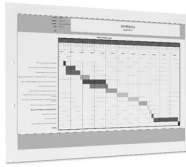
Hole Punched



Saddle Stitched Booklet



A3 Landscape Hole Punched



### High quality printing

High quality document communication becomes the norm using the iR3025N, iR3035N and iR3045N with crisp, clear prints. Professional finishing facilities make it easy to produce stapled or hole punched reports, impactful booklets and customer proposals on a variety of different media types and sizes.

**Superb quality**

Canon's iWPM software further enhances professionalism. When you want to create a report combining information from different files - such as Word, PowerPoint or Excel - normally you need to print them first and then manually collate, which is time consuming. iWPM however lets you carry out the collation quickly and electronically at your desktop, prior to printing a completed version.

### Powerful communication

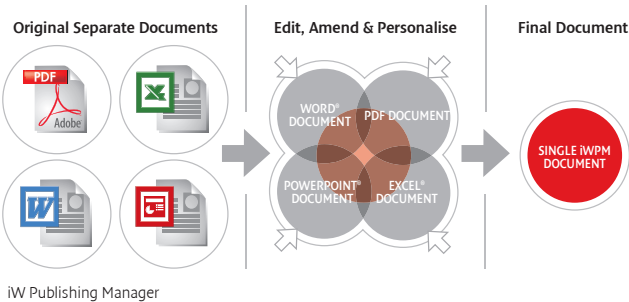
The iR3025N, iR3035N and iR3045N opens up new ways to communicate information throughout your office. For example, documents can be scanned at 45 images per minute via the document feeder, instantly encrypted and then dispatched securely as PDFs using Canon's i-Send to various locations - such as network folders, email addresses and mailboxes. This is all achievable without the need for additional software.



Mailbox

### Mailboxes

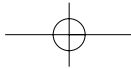
The iR3025N, iR3035N and iR3045N incorporates mailboxes for added versatility and confidentiality. Mailboxes act as secure storage at the device for all documents, and can be established for individuals and groups of users. Any document can be scanned, sent to, or printed directly from a mailbox at your convenience - handy if you don't want a confidential report lying around before you have a chance to retrieve it. You can also preview documents in your mailbox at the device before printing.



**Solutions for added value.**

Fast communication.

iR3025N / iR3035N / iR3045N



# Deliver communication that always impresses

Bring true document versatility to your office with a choice of devices and a wide range of configurations to best suit your business environment and budget.

## 1 Professional finishing

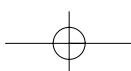
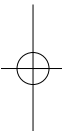
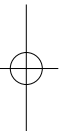
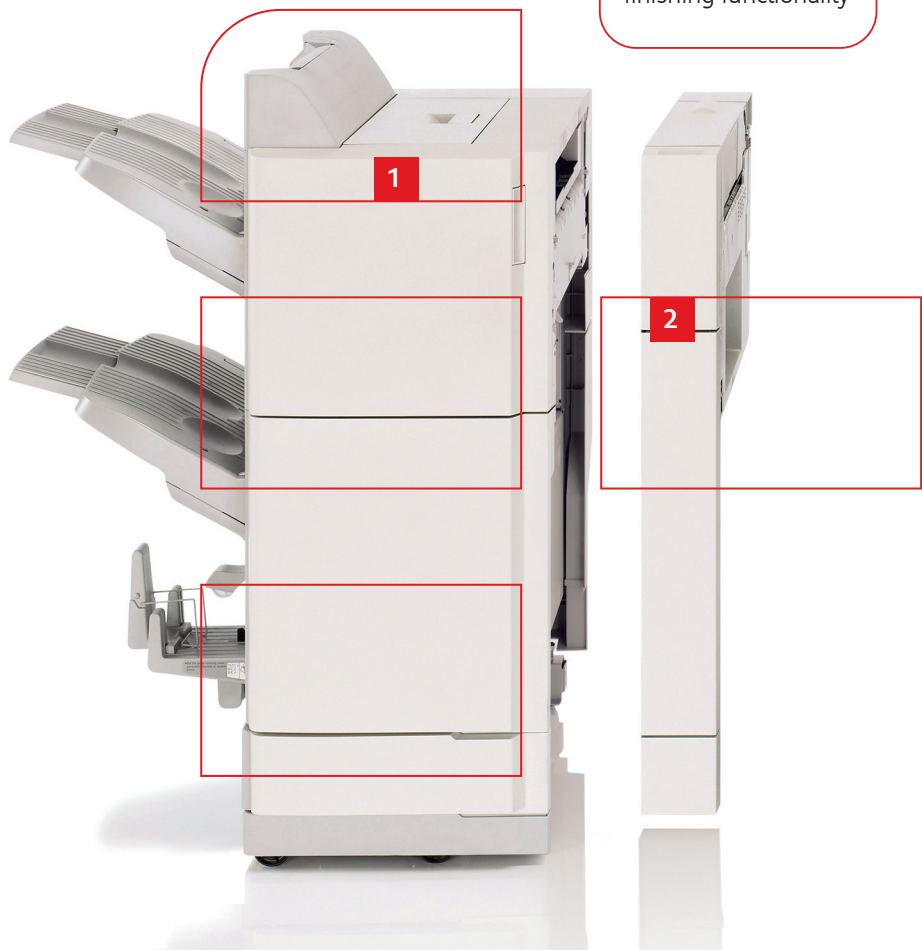
To create the most professional-looking documents, turn to the Saddle Finisher AE2. With it you can produce automatically folded 60 page booklets, using 15 sheets with no more than a few simple mouse clicks – all from the comfort of your desktop. It's even

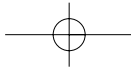
### Professional Output

possible to create booklets up to an impressive A4 in size. Add Canon's iWPM, and you can combine information from different sources to create a staff magazine, or even your own company brochure.

Print or copy reports and then staple up to 50 pages A4 or 30 paged A3/A4R using corner or double stapling. 1000 A4 – A5R sheets can be handled in a single print/copy run.

Use iWPM and the Saddle Finisher for the ultimate in a finishing functionality





**3 Document feeder/image reader**

A 50 sheet document feeder helps cope with scanning and sizeable copy runs, accommodating documents with different sized pages. Using the image reader and Canon's Universal Send feature enables you to scan documents and send them instantly to email addresses, mailboxes and network folders.

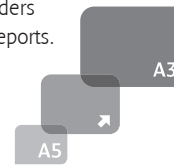
**5 Environmental approach**

Canon's on-demand fixing technology means that the device automatically enters stand by mode when not in use to save power. It's then ready to use again in seconds when needed for maximum productivity. The device also adheres to the strictest environmental standards such as RoHS, which restricts the use of hazardous substances. The toner "charging process" employed means no ozone is produced - reassuring in today's environmentally conscious businesses.

Using MEAP (Multifunctional Embedded Application Platform), Canon's device-embedded Java based application platform, enables new and customised software to be incorporated directly within your device. This way your investment keeps pace with the very latest in office communication technology.

**6 7 8 Expansive paper supply**

Combine all paper sources including the paperdeck for a maximum total of 4,950 sheets providing huge versatility from 6 different sources. Each of the 550 sheet cassettes are user-adjustable to cope with paper sizes between A5 - A3. Imagine producing A5 leaflets to raise awareness of key business issues or even producing A3 posters. A 50 sheet manual bypass facility accommodates heavier paper weights, allowing you to create documents using media up to 128gsm. It can also be used to print directly onto tab-sheets, which act as section dividers for important business reports.



Maximum paper capacity:  
4,950 sheets

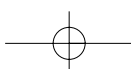
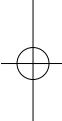
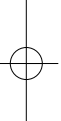


Stand-by power consumption: 1.5w



- 1 Saddle finisher AE2 - optional**
- 2 Hole punch - optional**
- 3 DADF (50 sheets) - optional**
- 4 Standard output tray**
- 5 Environmental approach**
- 6 Paper cassettes (2 x 550 sheets)**
- 7 Paper cassettes (2 x 550 sheets) - optional**
- 8 Paper deck (2700 sheets) - optional**

iR3025N / iR3035N / iR3045N





# Specifications iR3025N iR3035N iR3045N

Type	Desktop	<b>DADF-N1</b>	Paper size	A3-ASR
Maximum Original Size	A3	Paper size	Single sided original: 42 to 128 gsm	
Copy Sizes	Cassette: A5R - A3	Double sided original	50 to 128 gsm	
Stack Bypass	A3- A5, Free Size	Max. Number of originals	50 sheets (80 gsm)	
Resolution	(99 x 148 mm to 297 x 432 mm), Envelopes Scanning 600dpi x 600dpi	Document Scanning speed	Copy: A4 iR3045N: 45 ipm, iR3035N: 35 ipm, iR3025N: 25 ipm	
Copy/Print Speed	Copying 1200 dpi equivalent x 600 dpi	Dimensions (W x D x H)	Scan: A4 45ipm	
A4	Printing 2400dpi equivalent x 600dpi	Weight	565 x 538 x 122 mm	
A3	256 Gradations		Approx. 8.5kg	
First copy time	iR3045N: 45 ppm B&W	<b>CASSETTE FEEDING UNIT Y3</b>	Type	2 Front-loading adjustable drawers
Warm-Up Time	iR3035N: 35 ppm B&W	Paper Capacity	Dimensions (W x D x H)	550 sheets (80 gsm) x 2 cassettes
Multiple Copies/Prints	iR3025N: 25 ppm B&W	Weight	Dimensions (W x D x H)	565 x 700 x 252 mm
Duplexing	iR3045/35N: 22 ppm B&W		Weight	Approx. 23kg
Paper weight	iR3025N: 14 ppm B&W	<b>PAPER DECK-Q1</b>	Paper Size	A4
Cassette	iR3045/35N: Less than 3.9 sec	Paper Capacity	Dimensions (W x D x H)	2,700 sheets (80 gsm)
Universal	iR3025N: Less than 4.9 sec	Weight	Weight	372 x 591 x 473 mm
Paper Capacity	30 sec max (10 sec max from sleep mode)			Approx. 29.6kg
Standard	1 to 999 sheets	<b>FINISHER-S1</b>	Number of trays	One stack tray (Inner) & one optional tray
Multi Stack Bypass	Standard automatic stackless	Tray capacity	Tray capacity	One Tray: A4-ASR: 1000 sheets, A3, A4R: 500 sheets
Optional	Cassette 64 to 90gsm	Staple position	Staple position	Two Trays (Optional): A4-ASR: 300 sheets on each tray,
Side paper deck	Stack Bypass 64 to 128gsm	Staple capacity	Staple capacity	A3, A4R: 150 sheets on each tray
Max paper capacity		Weight	Weight	Corner
CPU				A4: 50 sheets
Memory				A3, A4R: 30 sheets
Hard Disk Drive				Approx. 12kg
Interface		<b>FINISHER-AE1/SADDLE FINISHER-AE2</b>	Number of trays	2 tray
Power Supply		Tray capacity	Tray capacity	A4-ASR: 1,000 sheets
Power Consumption		Staple position	Staple position	A3: 500 sheets
Dimensions		Staple capacity	Staple capacity	Corner, Double, Saddle Stitch (AE2 only)
Installation space		Saddle Stitch Specifications (Saddle Finisher-AE2 only)	Saddle Stitch Specifications (Saddle Finisher-AE2 only)	A4: 50 sheets
Weight		Dimensions (W x D x H)	Dimensions (W x D x H)	A3, A4R: 30 sheets
<b>PRINTER KIT-S1 (STANDARD)</b>		Weight	Weight	
PDL	PCL5e, PCL6 and UFR II			Paper size: A3, A4R
Resolution	2400 equivalent x 600dpi			Staple capacity: 1 to 15 sheets (60pages, 64-80gsm)
Memory	512MB (up to 756MB)			Paper weight: 64 to 80 gsm (128gsm for Cover)
Hard Disk	20GB (Uses Main unit HDD)			AE1: 643 x 657 x 1037 (mm)
CPU	300MHz (Uses Main unit CPU)			AE2: 747 x 657 x 1037 (mm)
PCL Fonts	Roman80, Bitmap1			AE1: 43.2kg
Supported OS	PCL: Windows 98/Me/2000/XP/Server 2003/Vista UFR II: Windows 2000/XP/Server 2003/Vista, Mac OSX 10.2.8 or later			AE2: 73.2kg
Interface	Ethernet (100Base-TX/10Base-T), USB	<b>OTHER ACCESORIES</b>		
Network Protocol	TCP/IP (LPD/Port9100/IPP/PPS/SMB/FTP), IPX/SPX (NDS, Bindery), AppleTalk			PS Printer Kit-S1, iR 256MB Expansion RAM-B1, Expansion Bus-B1, USB Application Interface Board-G1, Barcode Printing Kit - A1, Web Access Software-F1, Secure Watermark-A1, Encrypted Printing Software-C1, HDD Data Erase Kit-A1, HDD Data Encryption Kit-B4, Universal Send Searchable PDF Kit-A1, Universal Send PDF Security Feature Set-A1, Digital User Signature PDF Kit-A1, Super G3 FAX Board-Q1, iR3100C pedestal, FL Cassette-Y1(L), FL Cassette-Z1 (M), Platen Cover Type H, Stamp Ink Cartridge - B1, Inner 2way Tray-D1, Additional finisher Tray-B1, Buffer Pass Unit-E2, Copy Tray - J1, Puncher Unit - L1 (2holes), Puncher Unit - N1(4holes FRN), Puncher Unit-Q1 (2holes), Puncher Unit-S1 (4holes FRN), Staple - J1, Staple Cartridge-D3, Card Reader - C1, Card Reader Kit - B1, Document Tray - J1, ADF Access Handle-A1, Remote Operators Software Kit-A2, Voice Guidance Kit-B1 (English), Voice Operation Kit-A1 (English).
Pull Scan	Network TWAIN Driver (150 to 600dpi /Black & white/ Halftone)			
<b>OPTIONAL PS PRINTER KIT-S1</b>				
PDL	PostScript3 Emulation			
PS Fonts	Roman136			
Supported OS	Windows 98/Me/2000/XP/Server 2003/Vista, Mac OSX 10.2.8 or later			
Mac-PPD	Mac OS9.1 or later, Mac OSX 10.2.8 or later)			
<b>UNIVERSAL SEND KIT-G1</b>				
Scan Speed	45 ipm: A4 300dpi with DADF			
Scan Resolution	100dpi, 200 x 100dpi, 200dpi, 200 x 400dpi, 300dpi, 400dpi, 600dpi			
Destinations	E-Mail/Internet FAX (SMTP), PC (SMB, FTP, NCP), iWDM			
Address book	LDAP, Local (Max.1800)			
File Format	Single: TIFF, PDF Multi: TIFF, PDF			

Some images are simulated for clarity of reproduction. All data is based on Canon's standard testing methods. This leaflet and the specifications of the product have been developed prior to the date of product launch. Final specifications are subject to change without notice.™ and ®: All company and/or product names are trademarks and/or registered trademarks of their respective manufacturers in their markets and/or countries. Canon Recommends you use Canon Media for the best results. Please check media (paper) compatibility list to see which variety of paper/media is recommended. Canon's GENUINE logo means Quality all-round performance. For more information, go to [www.canon-europe.com/Canon\\_Copier\\_Consumable\\_Technology](http://www.canon-europe.com/Canon_Copier_Consumable_Technology)

you can  
**Canon**

Canon Inc.  
[www.canon.com](http://www.canon.com)

Canon Europa N.V.  
[www.canon-europe.com](http://www.canon-europe.com)

English-UK Edition 0071W198  
© Canon Europa N.V., 2007 (0207)

Canon (UK) Ltd  
Woodhatch, Reigate  
Surrey RH2 8BF  
Telephone No: 08000 353535  
Facsimile No: 01737 220022  
[www.canon.co.uk](http://www.canon.co.uk)

Canon Ireland  
Arena Road, Sandymore  
Industrial Estate  
Dublin 18, Ireland  
Telephone No: 01-2052400  
Facsimile No: 01-2958141  
[www.canon.ie](http://www.canon.ie)



**meap**  
POWERED BY I



**Canon**  
Conservation Partner